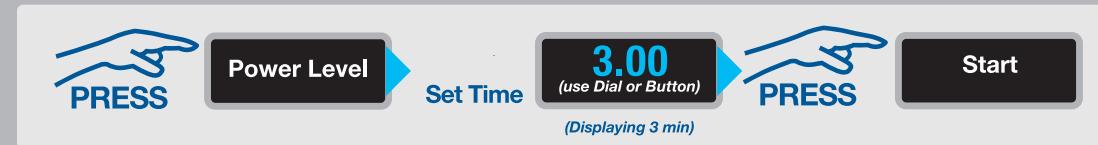


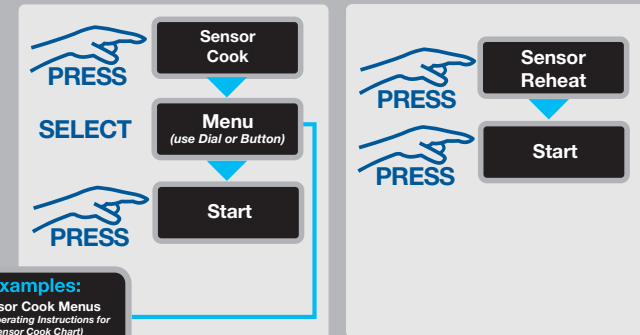
tip² Cooking Options

After placing food/beverage inside the microwave oven, set functions manually or let the oven set them automatically.

Manual –Basic Cook



Automatic (use Dial or Button) Sensor Technology



- Examples:**
Sensor Cook Menus
(See Operating Instructions for Sensor Cook Chart)
1. Oatmeal
 2. Omelet
 3. Soup
 4. Frozen Entres
 5. Frozen Pizza (single)
 6. Potatoes
 7. Fresh Vegetables
 8. Frozen Vegetables
 9. Frozen Dinners

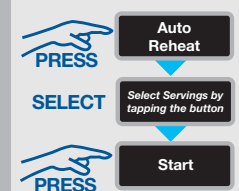
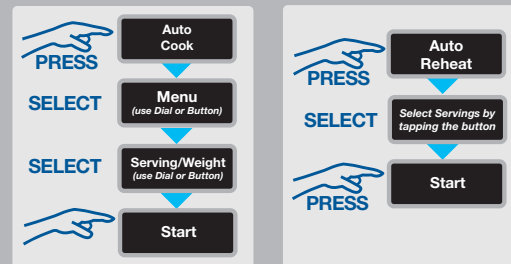
(If your model number starts with a '5' or '6' the light will not turn on when you open the door.)

tip² (cont'd)

Automatic Defrost Technology (use Dial or Button)



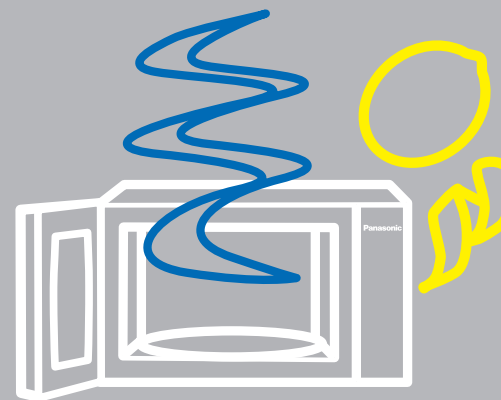
Automatic Technology



tip³ Removing Odors

How to Remove Cooking Odors

1. In a 2 quart microwave safe bowl combine 1 to 1-1/2 cups (250 - 375 ml) of **water** and the **juice and peel(s) of one lemon** - stir ingredients.
2. Set Time to **"5" minutes**.
3. Push the **"Start"** button.
4. After water finishes boiling, carefully remove the bowl.
5. Wipe the interior of the oven with a cloth.



Customer Service Contact

On-line or by Phone

Visit our web site at <http://www.panasonic.com/help> and then enter your model number in the box for information about:

- Product Information and Operating Assistance
- Nearest Dealer or Service Center
- Parts and Accessories
- Literature
- Customer Service

Or,

You can contact us at:

1-800-211-PANA (1-800-211-7262)

Monday – Friday 9am to 9pm EST

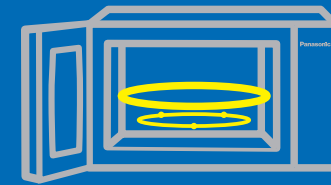
Saturday – Sunday 10am to 7pm EST

set-up guide

Thank you for your purchase of a Panasonic Microwave Oven. Before using your oven, follow these quick steps.

IMPORTANT: For complete directions, please refer to the Operating Instructions Manual and make sure to write down in the Operating Instructions Manual the serial number located on the back of the oven or on the doorjamb.

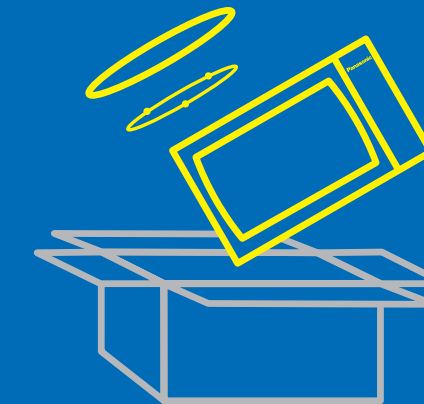
Install **roller ring** and **glass tray** into oven.



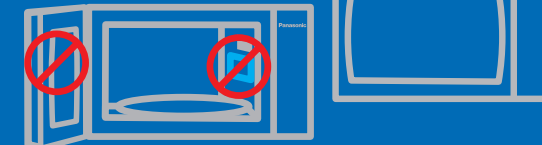
1 Initial Set-Up

Make sure you remove all packing material from the oven. Locate the glass tray and roller ring.

Keep the Operating Instructions and other documentation in a place easily accessible.



With some models, you may need to **remove a blue protective film** from the cabinet. Also, **remove the protective sheet** from the surface of the keypad.



IMPORTANT: DO NOT remove the wave plate from the inside wall of the oven! **DO NOT** remove the protective film behind the door!

Panasonic ideas for life

Panasonic ideas for life

F04209Q90AP

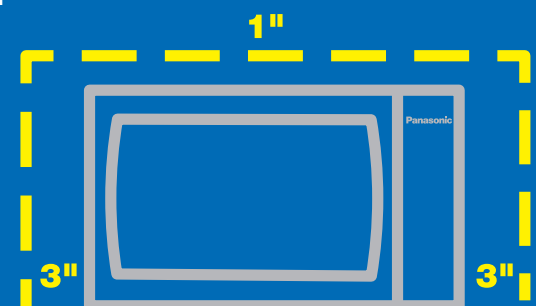
2 Space & Power Requirements

Select a clean, flat area on your counter to place the oven.

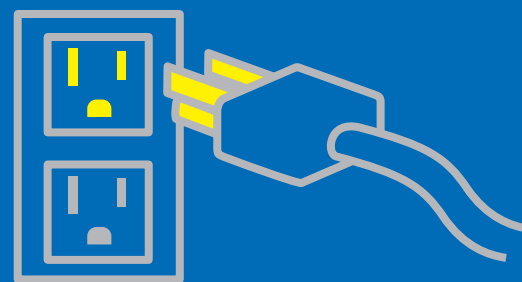
DO NOT place oven near gas or electric range.

DO NOT block air vents on left side.

DO NOT operate the oven empty.



Be sure to plug the oven into a **grounded wall outlet** rated at least 20 A, 120 V, 60 Hz.



3 Cooking Conversions

When turned on, the oven weight measurement guide automatically defaults to (oz/lbs).

To **convert to metric (g/kg)**, press the **"Start"** button.

Press the **"Stop"** button, colon (:) will appear in the display window when change is completed.

If your oven has a "Function" button, the metric weight is controlled by...

Press button: **"function"** ...
"2" ... "2"



You are now ready to set the clock. →

4 Set Clock

To set the clock, press **"Clock"** once or **"Timer/Clock"** twice (depending on your keypad).

The colon symbol (:) will flash.

Enter time of day. The time appears in the window; the colon continues to flash.

Press **"Clock"** or **"Timer/Clock"** again - colon stops flashing; time of day is set.

You are now ready to use your new Panasonic Microwave Oven.

Note:

- Clock is a 12-Hour Display
- Oven will not operate while colon (:) is flashing

tip¹ Safety Options

Panasonic

LOCK

When you first turn on your microwave oven and under normal operation the **"CHILD LOCK"** feature is off.

If **"LOCK"** or **"CHILD"** appears on your display . . .

Press the **"Stop"** button three (3) times and the **"CHILD LOCK"** will be turned off.

If you want to activate the **"CHILD LOCK"** feature. . .

Press the **"Start"** button three (3) times and the **"CHILD LOCK"** will be turned on.

For Models that have **"FUNCTION"** button . . .

To turn Off **"CHILD LOCK"** Press buttons: **"function"**...**"5"**...**"2"**

To turn On **"CHILD LOCK"** Press buttons: **"function"**...**"5"**...**"1"**

"DEMO" mode is a feature used in stores for demonstration purposes. It will not be active when you turn on the microwave oven or, for normal operation.

Panasonic

DEMO

If **"DEMO"** appears on your display...

Press buttons: **"function"** ... **"0"** ... **"2"**

"Demo Mode" will be turned off.